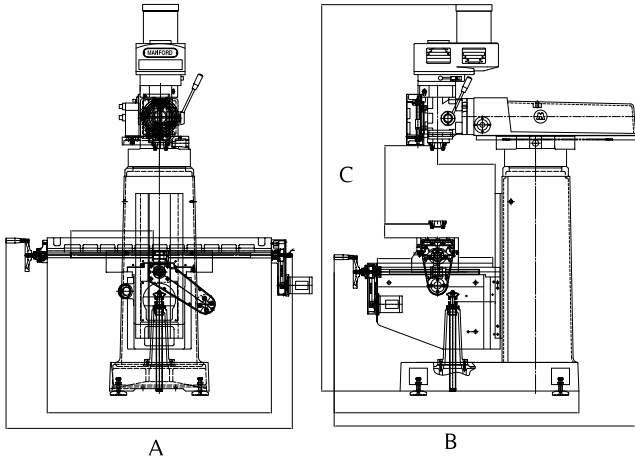


## CNC MILLING MACHINE

### CV-520



■ Fagor 8055i is available for option

MIL-PWR: G2 available for option



Specifications	CV-520
<b>Travel</b>	
Longitudinal travel	1003 mm (39.7")
Cross travel	405 mm (16")
Knee travel	432mm (17")
Quill travel	127 mm (5")
Ram travel	560 mm (22")
<b>Table</b>	
Table size	1473x279 mm (58"x11")
T-slot (No. x Size)	3x16 mm (3"x5/8")
Max. table load	350 Kgs (771Lbs)
Spindle nose to table surface	99~530 mm (3.9"~20.9")
<b>Spindle</b>	
Spindle motor	5 HP
Spindle taper	NST#40
Over swivel on turret	360°
Head swivel (L&R)	45°
Head tilt (Up&Down)	Nil (Optional: 45° )
Spindle center to column surface	168~730 mm (6.6"~29")
<b>Speed</b>	
Quill feed	0.04~0.08~0.14 mm (0.0015"~0.003"~0.006")
Spindle speed	60HZ 60~4500rpm 50HZ 50~3800rpm
XY feed rates	0~3M/min
XY rapid traverse	5M/min
<b>Machine Dimension</b>	
Overall width (A)	1900 mm (75")
Overall depth (B)	1850 mm (73")
Overall height (C)	2375 mm (93.5")
Net weight (Approx.)	1800 Kgs (3960 Lbs)



Shown as 3 axis configuration

### feature:

- Spindle material is SCM415 full hardened through carbonizing heat treatment.
- NST#40 spindle with 5HP variable speed motor ( inverter motor is available for option).
- Spindle quill drive box is transmitted by ballscrew for better precision.
- Essential castings are made of high grade of Meehanite cast iron, which has been stressed, relieved to provide a rigid machine structure.
- Standard with 11X58" table, hardened and ground.
- Table T-slot is precision ground to exact tolerance.
- Box way design on Y&Z axes leads to better rigidity.
- Lifting screw diameter 38mm assures the stability while machining.
- Precision ballscrews are used on X&Y axes.
- X&Y slideways and gibs are coated with Turcite-B to provide smooth and wear resistant surface.

We reserve the right to modify and improve the specifications without any prior notice. The specifications shown are for reference only